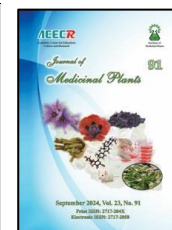




Institute of
Medicinal Plants

Journal of Medicinal Plants

Journal homepage: www.jmp.ir



Review Article

A review on ethnopharmacology and phytochemistry of *Premna mollissima* Roth.

Shweta Rawat*, Manisha Thapliyal

Forest Tree Seed Laboratory, Forest Research Institute, Dehradun, Uttarakhand, India

ARTICLE INFO	ABSTRACT
<p>Keywords: <i>Premna mollissima</i> Roth. Lamiaceae Anti-inflammatory Agnimantha Ayurveda</p>	<p>Background: <i>Premna mollissima</i> Roth. belong to family Lamiaceae is a small deciduous tree commonly called as dusky fire brand bark. It is distributed in tropical or subtropical climate, often in hilly or forested areas of India, Sri Lanka, Bangladesh and Myanmar. Objective: To summarize a systemic review of the ethno-pharmacology and phytochemical study of <i>P. mollissima</i> Roth. It also includes the therapeutic importance as stated in literature and the pharmacological aspects which have been already explored in the present-day scientific parameters. Methods: An ethno-pharmacological review of <i>P. mollissima</i> was done through the texts, as well as searching research articles related to its pharmacognosy, traditional uses, phytochemistry, and therapeutic activities available on Pubmed, Science Direct, Google Scholars, Scopus, and Web of Science from their dates of inception till present. The following keywords were applied to the literature search “<i>Premna mollissima</i>”, “Agnimantha”, “phytochemistry” to find the description of the plant. Results: Various chemical constituents can be obtained from the plant such as premnine, 7-deacetylpremnine, premnalatifolin, quercetin, etc. The root, leaf and bark is used in Ayurveda and folk medicine for the treatment of different ailments such as dropsy, treatment of edema, boils, fevers, rheumatism, neuralgia, etc. Various studies have indicated its astringent, anti-inflammatory, anti feedant, diuretic, digestive, and antibacterial properties. Conclusion: This study is an attempt to compile an up-to-date and comprehensive review on <i>P. mollissima</i> Roth. covering its traditional and folk medicinal uses, phytochemistry and pharmacology. It will help future researchers to explore more about its active phytoconstituents and pharmacological activities.</p>

1. Introduction

Premna mollissima Roth. (Earlier *Premna latifolia* Roxb.) syn. *Gumira mollissima* (Roth) Kuntze, *P. mucronata* Roxb.(family Lamiaceae), commonly known by various names such as: jhatela, bakarcha, basota, agnimantha, nelli, gonderi, gunara, munja, nappa and dusky fire brand bark in different parts of the world and is

distributed in southern Asia including Cambodia, China, India, Indonesia, Laos, Malaysia, Myanmar, Nepal, Philippines, Sri Lanka, Thailand and Vietnam [1]. It is a deciduous tree about 20-25 ft tall with a spreading crown and a natural inhabitant of lower and outer sub-tropical, Himalayan tracts extending from Chenab in north-west India to Bhutan in the east

Abbreviations: DPPH, 2,2-diphenyl-1-picrylhydrazyl; ABTS, 2,2'-azino-bis (3-ethylbenzothiazoline-6-sulphonic acid)

*Corresponding author: rawatshweta0108@gmail.com, usenquires@fridu.edu.in

doi: [10.61186/jmp.23.91.16](https://doi.org/10.61186/jmp.23.91.16)

Received 02 June 2024; Received in revised form 11 November 2024; Accepted 13 November 2024

© 2023. Open access. This article is distributed under the terms of the Creative Commons Attribution-NonCommercial 4.0 International License (<https://creativecommons.org/licenses/by-nc/4.0/>)

and extending to an elevation of 1500 meter [2]. In the western Sub-Himalayan tract it is often found in the mixed forest which marks the transition stage between the riverine forest of *Acacia catechu* and *Dalbergia sissoo*, and the final stage of sal forest on the more elevated lands [3]. Various studies on phytochemical composition of *P. latifolia* have reported the presence of active ingredients such as glycosides, steroids, saponins, phenols, flavonoids, terpenoids, and tannins [4]. The Ayurvedic Formulary of India (2000) [5] describes *P. latifolia* Roxb. as a substitute of *P. integrifolia* Linn. which is one of the ingredients in dashmoola (an ancient ayurvedic formulation made up of ten herbs which is used in various ayurvedic medicines). Different parts of the plant can be used medicinally like root, leaf and bark. The leaves of are reported to have diuretic properties, useful in agalactia, dropsy, dyspepsia, flatulence, neuralgia, piles, rheumatism and tumours [1]. The root is effective as appetizer, astringent, useful in abscess, asthma, bronchitis, cardiac disorders, diabetes, diarrhoea, inflammations, rheumatoid arthritis, rhinitis, etc. [6] and also applied after parturition in Burma [7]. The stem bark is applied to heal various skin diseases, wounds and to reduce fever [8].

Taxonomical classification of *Premna mollissima* Roth.-

Kingdom	Plantae
Phylum	Angiosperms
Class	Eudicots
Order	Lamiales
Family	Lamiaceae
Genus	<i>Premna</i>
Species	<i>mollissima</i>

2. Material and Method

A literature-based search was performed covering research articles that have been

published online, to retrieve information on Ethno-pharmacology, phytochemistry, active constituents, molecular pharmacology, Ethnobotany from accessible online databases, such as Pubmed, Science Direct, Google Scholar, Scopus and Web of Science from their dates of inception till present using the key search terms of “*Premna mollissima*”, “dashmoola”, “Premnine”. This review also includes literature collected via traditional texts and modern pharmacological books.

3. Ethno-botany

The family of genus *Premna* L. was transferred from Verbenaceae to Lamiaceae [9], subfamily Viticoideae [10]. There are 46 species recognized in the Flora of China [11] and 14 species occurring in the Flora Malesiana area [12]. The generic name is derived from the Greek “premon” meaning tree stump, referring to the often short and twisted tree trunks of *P. serratifolia*. Most of the *Premna* species are widespread but a series of morphologically closely related and generally geographically restricted species occur from India to New Guinea [13]. The genus *Premna* contains about 200 species worldwide which are mainly distributed in the Old World tropics from Africa to China, throughout Indochina and Malaysia, to Australia and the Pacific [9]. Most species of *Premna* are small trees or shrubs, rarely lianas. However, some of the rare and geographically restricted species are exclusively lianas (*P. trichostoma*), about 35 species of *Premna* are reported from India [14]. It is a large shrub or small tree having smooth bark, grayish white in colour, leaves are cordate or ovate, cuneate, rounded, flowers are greenish yellow, small, in paniculate corymbs, borne in flat-topped 60–80 mm long compact corymbose inflorescences that are produced at branch-ends. Individual

inflorescences produce 101 ± 56 flowers over a period of one week. drupe 4-celled. Trunk is 1.2 m in girth, leaves 5-17 cm long and are aromatic when crushed. The fruit is nearly a globose

indehiscent drupe, 6×4 mm across, green initially, bluish-black or black upon ripening, and shiny, seated on saucer shaped sub entire calyx. [3, 15, 13].



Fig. 1. *Premna mollissima* Roth.

4. Climate and soil

The plant is well adapted to the sub-tropical hilly tracts in outer Himalayas with average annual rainfall around 100 cm, and the tropical regions of eastern and Peninsular India. In north India, it is often found on dry slopes and large, natural, degraded soil bunds. The plant grows on average clayey or pebbled shallow soils. Plantation on deep loamy soil with good drainage and a pH range of 7.3 to 8.0 have shown good results [16].

5. Propagation technique

Seeds are used as propagation material which, have a short viability of about three months. Seeds are sown in June, preferably in poly bags, immediately after collection and drying for a few days. The pulp of the fruit withers off after drying. As the seed is hard and stony, seed pre-treatment such as soaking the seeds in water for a minimum of 72 hours is necessary. Seed germination is around 70 %. Mechanical or acid

scarification improves seed germination to 85%. About 100 gm seed is sufficient to raise plants for one hectare of land. Vegetative propagation is done through air layering and root coppices during the rainy season [16].

6. Traditional uses of *P. mollissima*

P. mollissima is of great value in ethnobotany. Almost all parts, i.e. root, leaf and bark have numerous medicinal uses. The root is used in many Ayurvedic preparations such as amrtarista, dantyadyarista, dasamularista, cyavanaprasa, brahma rasayana, dashamoola kwath, maharasnadi kwath, saptasara kvatha churna, narayana taila, brhatmasa taila and rasnadi churna [17]. Root is reported to be an appetizer, astringent and bitter, useful in abscess, asthma, bronchitis, cardiac disorders, cough, diabetes, diarrhoea, inflammations, neuralgia, obesity, rheumatoid arthritis, rhinitis, stomach disorders and as a post-delivery tonic for women [6, 18]. The roots are applied after parturition in Burma

[7]. The leaves reported as diuretic, useful in agalactia, allergy, colic, cough, dropsy, dyspepsia, flatulence, neuralgia, piles, rheumatism and tumours [1]. The stem bark is applied to heal wounds, eczema, ring-worms, boils, skin diseases, itches and to reduce fever [8]. *P. latifolia* Roxb. is the most exploited wild food plant used during famine among the Karbi tribe. Nutritional analysis reported that bark of the plant is rich source of protein and carbohydrate. It also contains a good amount of amino acid and reducing sugar. Fresh moist bark is popularly used as medicine for relieving from stomach disorder including blood dysentery, painful micturition and also from bruises, burn and minor cuts among the Karbis [19].

7. Chemical constituents of *P. mollissima*

Diterpene: The genus *Premna* is mainly characterized by its diterpenoid constituents [9]. Various studies have identified 91 skeletons of diterpenes within Lamiaceae, of which 13 skeletons were frequently identified [20], and abietane diterpenes were highlighted as the most abundant and widespread within Lamiaceae. Eighteen abietanes, a nor-abietane, two secoabietanes and a abietane have successfully been identified in the plant [21]. Some of them are -5,6-Double bond of 6a,11,14,16(or 17)-tetrahydroxy-abieta-8,11,13-triene, 5,6-Double bond and enolic 6-OH of 6a,11,14,16(or 17)-tetrahydroxy-abieta-8,11,13-triene [21], 6a,11,14,16-tetra-O-acetylbieta-8, 1, 13 – triene – 7 – one [23], 13 –Formyl –11, 14 dihydroxy podocarpa -8,11,13-triene (Premnolal) [23, 25], 6,7-Dihydropremnolal [23], Sandaracopimar-15-en-8b-ol [25], Sandaracopimar-15-en-1b,8b-diol [21, 24].

Essential oil: Constituents obtained by hydrodistillation and ethanolic extraction method

were 3-Hexanol, alpha-Pinene, Pinane, 1-Octen-3-ol, beta-Pinene, 3-Octanol, alpha-Phellandrene, 2(10)-Pinene-3-one, -Phellandrene, 2(3H)-Furanone, 5-ethenyl dihydro-5-methyl, cis-Linalool oxide, Linalool oxide-trans, Nonanal, Linalool [2].

Fatty acid: Hydrocarbons and lipid-related constituents have been identified. Compounds isolated are Decanoic acid, Pentadecane, 1-Dodecene, 1-Dotriacontanol, Decane, 2-methyl, Octadecane, Heptadecane, 2, 6, 10, 15 tetramethyl, Tetradecanoic acid, Eicosane, Heptadecanoic acid. [2].

Sterol: Three skeleton type of pentacyclic triterpenes have been reported from the genus *Premna*, i.e. lupane, oleanane and ursane. Common plant sterols, such as stigmasterol, and their glycosides, are widely distributed among *P. latifolia* such as Stigmasterol β -Sitosterol [26, 27].

Sterol glycoside: β -Sitosterol-3-O-b-D-glucoside [23, 27, 28, 29]

Iridoid glycoside: The name 'iridoid' itself comes from iridodial and related compounds isolated from the defense secretion of *Iridomyrmex* species [30]. Classification of naturally occurring iridoids involves large groups, yet there are four distinguish classes i.e. the non-glycosidic iridoids, iridoid glycosides, iridoid acetal esters, and secoiridoid glycosides. Iridoid obtained from *P. latifolia* are Bisdesoxydihyromonotropein 7-deoxyloganic acid, Geniposidic acid [27, 29].

Lignan: Premnalatin have been isolated from the plant [27].

Favonoid glycoside: Apigenin 7-O-b-D-glucopyranoside-4'-acetate, Apigenin 7-O-b-D-apiofuranosyl (1'2)-a-L-rhamnopyranoside [28].

7.1. Phyto-components identified in the plant

66 different compounds with 10 major components have been identified in methanolic

extract by GC-MS analysis, which ensure the pharmacological potency of the plant [30] (Table 1) (Fig. 2).

Table 1. Components identified in the GC-MS analysis of the plant extracts

No.	Name of the compound	Nature of compound	Peak area (%)	Biological activity
1	Squalene	Triterpene	13.57	Skin emollient, antioxidant Antitumor
2	Ergosta-5,7,9(11), 22-tetraen-3-ol, (3.beta.,22E)-	Phytosterol	0.15	Antitumor
3	Stigmasterol	Steroid	3.73	Anti-osteoarthritic
4	γ -Sitosterol	Phytosterol	10.13	Antidiabetic
5	Lupeol	Triterpenoid	0.33	Prostate and Skin cancers, Anti-inflammatory
6	β -Amyrin	Triterpene	2.27	Analgesic, Anti inflammatory, Anticonvulsant, Antidepressive, Hepatoprotective, Antihyperglycemic Hypolipidemic
7	α -Amyrin	Triterpenoid	2.05	Anti-inflammatory, Antinociceptive, Antioxidant, Antipruritic, Gastroprotective
8	γ - Sitostenone	Phytosterol	0.35	
9	Ursolic aldehyde	Triterpenoid	1.01	Anti-glycative
10	Betulin	Triterpene	0.72	Antimalarial, Anti-inflammatory, Antifungal

7.2. Active chemicals isolated from various parts of *Premna mollissima* Roth.

Leaves: Iridoid glycoside (7- deoxyloganic acid, Geniposidic acid) [27, 39], diterpenes (Nellionol, Premnolal, Latifolionol, Latiferanol) and saponins [21], essential oil (terpendiol, α -pinene), Premnine, Latanoprost Acid, β -Sitosterol, Lupeol, 1-octen-3-ol (35.69 %), terpendiols I and II, δ -guaiene, 2-undecanone, α -pinene, palmitic, 8,11,14- docosatrienoic acid, stearic, linoleic, arachidic, behenic and lignoceric acids, eicosane, 3-octanone, ethyl hexanol, linalool, methyl salicylate and (E)-caryophyllene, furanoid premnalatin [31],

premnoside A, apigenin-4'- methoxy-7-O-arabino-rhamnoside and 5-hydroxy-4'-methoxyflavone-7-O-trioside, hexadecanoic acid (25.04 %), octadecanoic acid (6.82 %), 9, 12-octadecadienoic acid (4.19 %) [2, 32].

Stem bark: Premnalatifolin, (dimeric diterpene), hexadecanoic acid and 1-octen-3-ol icetexane diterpenes latifolionol, dihydrolatifolionol, latiferanol [31], Dihydrolatifolionol, iridoids, 7- deoxyloganic acid and geniposidic acid [2].

Root: Iridoid Glycosides (premnine, 7-deacetylpremnine, luteolin and premnalatifolin), Triterpene (Betulinic acid), Alkaloids

(premnamine, vallesiachotamine), fatty acids, stigmanstane esters and n tetracosanol [31]

Root Bark: Hydroxysandaracopimar-15-enes, bisnorditerpene (premnolal) and diterpenes (nellionol, dehydronellionol and anhydronellionol) [24], 5 dehydronellionol, sandaracopimar-15-en-8 β -ol and β -sitosterol, 14 α - hydroxyisopimar-7,15-diene, 7 α hydroxysandaracopimar (8, 14), 15-

diene, 7 α hydroxyisopimar-8,15-diene and 1 α , 8 β ,11 α -triol - sandaracopimar-15-ene [21], myristyl lignocerate (tetradecyl tetracosanoate, β -sitosteryl oleate, 1-hexacosanol and new monoterpene esters 1-benzoyloxy-10-plamityloxy geranilane, 1- benzoyloxy-10-(octadec-9"-enoyl) geranilane and 1- benzoyloxy-10-octadecanyl geranilane (33) (Fig. 3).

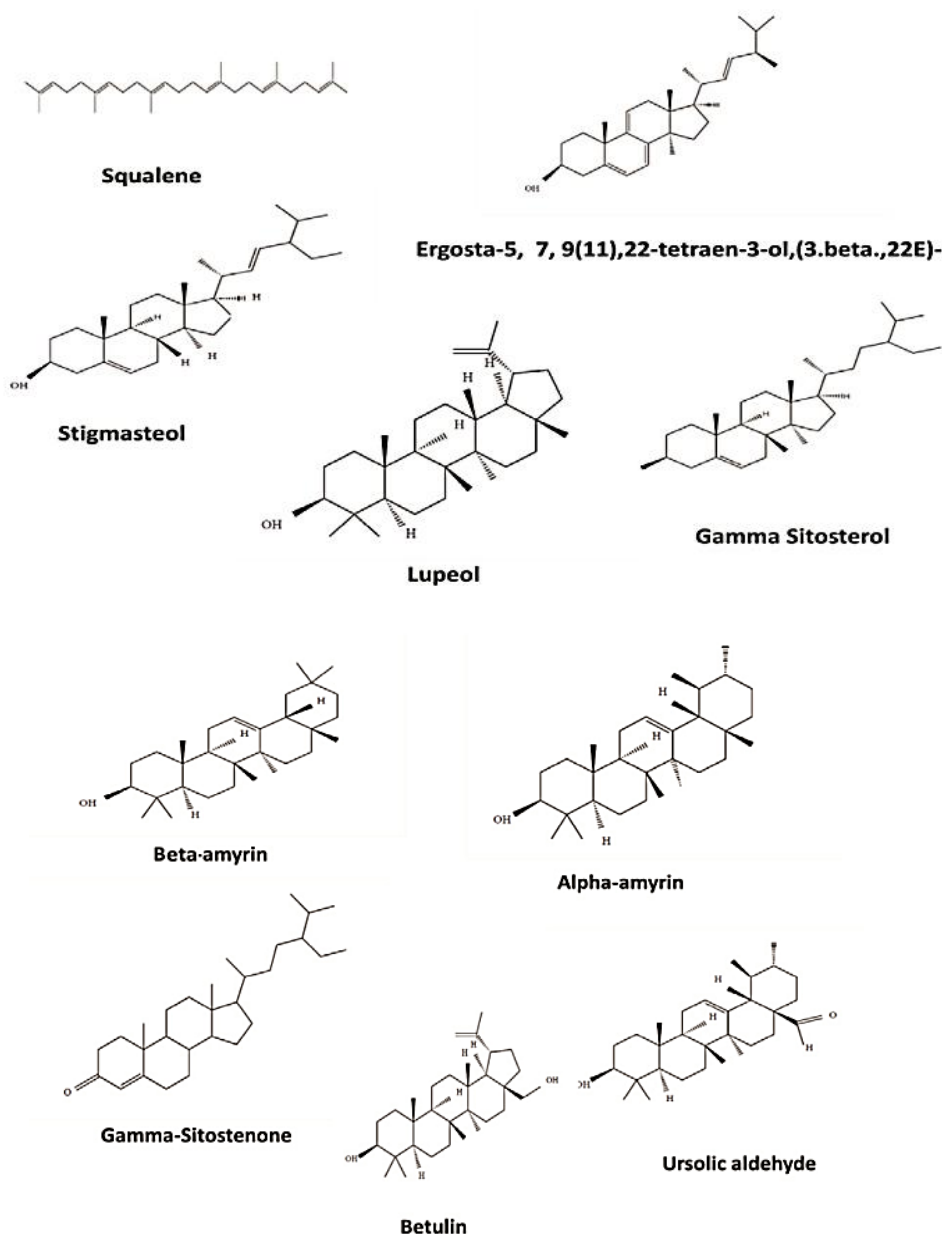


Fig. 2. Structure of phytoconstituents obtained from phytoscreening of *P. latifolia* Roxb. [30]

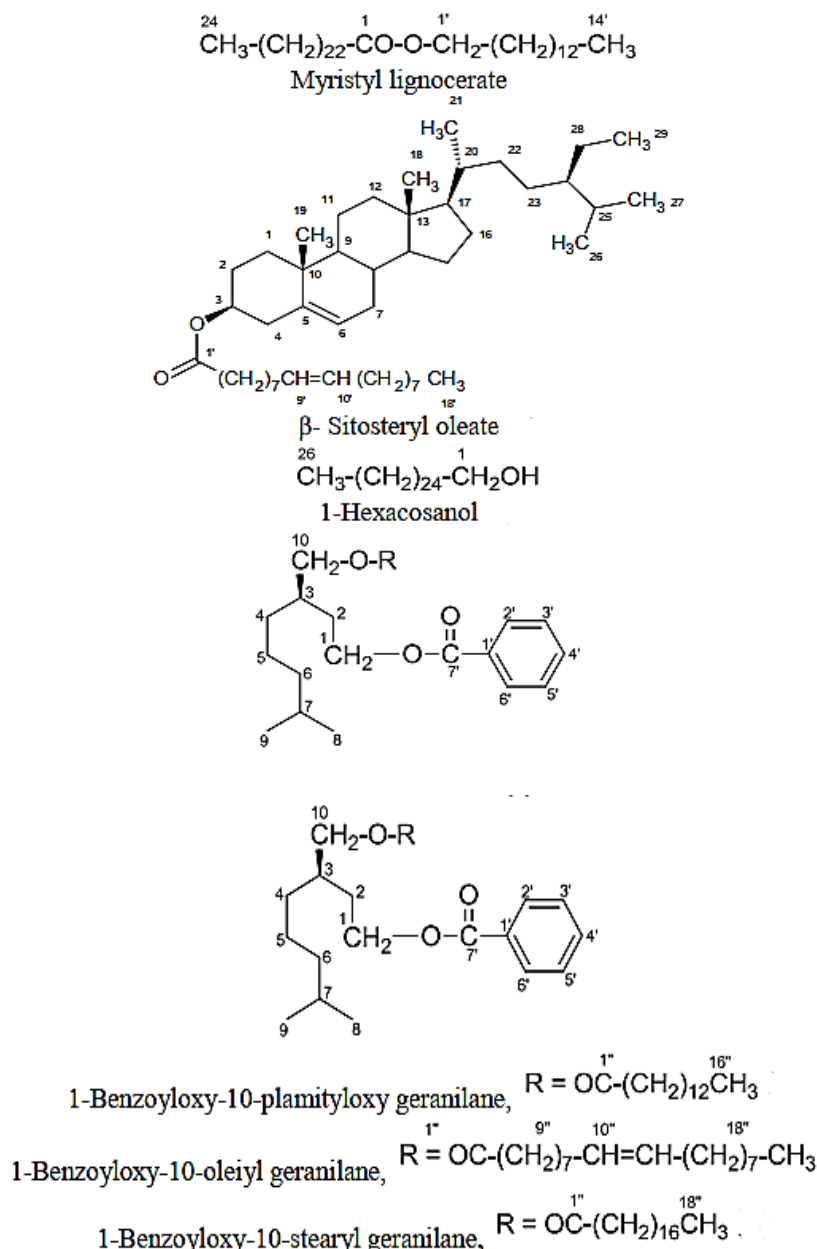


Fig. 3. Compound isolated from root bark of *P. mollissima* [33]

8. Pharmacological activities of various extracts of *P. latifolia* Roxb.

Antimicrobial activity: The leaves of *P. latifolia* Roxb. EtOH extract exhibits zone inhibition (8-10 mm) against the growth of *Pseudomonas aeruginosa*, *Staphylococcus aureus*, *Micrococcus luteus*, *M. roseus* and *Candida albicans* [34]. Studies validates the antifungal properties of *P. latifolia* when tested against

Fusarium and *Rhizopus* which shows moderate rate of inhibition. The fungal activity of the *P. latifolia* might be due to the presence of various secondary metabolites [36]. The bark of the plant is reported to treat ringworm in skin [36].

Antibacterial activity: Ethanol leaf extracts of *Premna latifolia* possess showed antibacterial activity against against four pathogenic bacteria with maximum zone of inhibition [37].

Anti-inflammatory effect: The leaf decoction of *P. latifolia* against carrageenan induced rat hind paw edema. The result signified that the leaves shows good anti-inflammatory effects [38]. Also, MeOH ext. of leaves exhibited significant anti-inflammatory activity on the three animal models, dose dependently using carrageenan-induced paw edema, cotton pellet-induced granuloma, and acetic acid-induced vascular permeability models [39]. .

Anti-oxidative effect: Bark and leaf extracts were evaluated for antioxidant activities by DPPH radical and ABTS scavenging assay. The methanolic extract of bark and leaves of *P. latifolia* showed the presence of maximum phytochemicals (12&11) when compared to other solvent extracts viz. hexane (PLHEX) (10&9), ethanol (PLETH) (9&8), and chloroform (PLCHLO) (8&7) respectively. The amount of phenolics and flavonoids present in solvents were in the order of Methanol > Hexane > Ethanol > Chloroform. The study indicates that the bark possess greater antioxidant potential in comparison to leaves and the extract could be used as a probable antioxidative agent [4]. The isolated flavones from *P. latifolia* leaves showed significant DPPH radical scavenging potential which indicates the potential antioxidant properties of the plant [28]. Other studies related to radical scavenging activity and antioxidant properties of *P. latifolia* are also reported [40]

Antifeedant activity: Evaluation of phytochemicals and antifeedant properties of oil isolation using fresh leaves of *P. latifolia* reveals presence of hexadecanoic acids namely, 9,12-octadecadienoic acid, 8,11,14-docosatrienoic acid and octadecanoic acid. Oil showed antifeedant activity against polyphagous crop pest *Spodoptera litura* [2].

Wound healing: Wound healing activity of the plant was studied using excision wound

model. Animals were divided into three groups of six male rats each as control group (GI) dressed with compound free simple ointment. Test group (GII) treated with 50 % aqueous ethanolic extract of *P. latifolia* stem (10 % w/w) in ointment vehicle and standard group (GIII) group treated Nitrofurazone ointment, Himedia (0.2 % w/w). The wound healing potential was further supported by the DPPH free radical scavenging and antibacterial activity of the plant. The phytochemical estimations were done using standard methods. The 50 % aqueous ethanolic extract of *P. latifolia* showed significant wound healing activity [41].

Anticalcogenic effect: Stem and leaves of *P. latifolia* assessed by scanning electron microscope analysis, which revealed the anticalcogenic effect of the plant [42].

Larvicidal effect: Evaluation of *P. latifolia* extracts using crude aqueous, chloroform, methanol and essential oil was done to see larvicidal effect using fourth instar larvae of *Aedes albopictus* Skuse. Authors reported essential oil constituents namely, β -cadinene (33.62 %), phytol (27.28 %) and α -selinene (9.42 %). The study reported that essential oil showed good amount of larvicidal action [43].

Antidiabetic effect: Ethanolic root extracts of *P. latifolia* was tested for glucose lowering action in STZ-nicotinamide induced diabetic rat model. *In vitro* inhibitory activities of enzymes, α -amylase and α -glucosidase were also assessed. Authors measured blood levels of creatinine, glucose, urea and nitrogen. Enzyme levels in liver and pancreas were also studied. As per their report, two fractions showed good antidiabetic activity. [44].

Conclusion

In the present review the importance of *P. latifolia* in various aspects have been explored.

The plant have been used to treat various ailments since ancient time. Investigating the chemical components is necessary to determine the mechanisms of action of potential markers and the structure-activity relationship between the constituents found in the root, stem, bark, and leaves. These findings give foundation for using the plant medicinally, as well as for the synthesis of active compounds and the use of clinical trials as a tool for creating Ayurvedic formulations. Due to the presence of several chemical constituents, *P. latifolia* can be used as a good source of active therapeutics. In Indian market, there are many Ayurvedic preparations containing parts of *P. latifolia* as important ingredient and are widely utilized. Depending on the primary information available on this plant, the isolation and identification of active

constituents, modern pharmacological evaluations on isolated compounds and their toxicity testing is to be explored which can help in future research work.

Author contributions

SR: Methodology, Investigation, Writing Original draft preparation, MT: Reviewing.

Conflicts of interest

We declare no conflict of interest.

Acknowledgment

Shweta Rawat thanks the National Forest Library & Information Centre, Forest Research Institute, Dehradun for providing necessary material and literature for the study.

References

1. Quattrocchi U. CRC world dictionary of medicinal and poisonous plants: common names, scientific names, eponyms, synonyms, and etymology. CRC Press, 1st Ed. Boca Raton, Florida. 2012, 869-870. doi: 10.1201/b16504.
2. Kumar A, Tamta ML, Negi N, Chandrasekhar K. and Negi DS. Phytochemical investigation and antifeedant activity of *Premna latifolia* leaves, *Natural Product Research: Formerly Natural Product Letters*, 2011; 25(18): 1680-1686. doi: 10.1080/14786419.2010.511620.
3. Troup RS. The silviculture of indian trees, Volume (II). 1921, 778pg.
4. Ruwali P and Negi D. Phytochemical analysis and evaluation of antioxidant activity of *Premna latifolia* Roxb. A medicinal plant (Family: Lamiaceae). *The Pharma Innovation Journal*. 2019; 8(5): 13-20.
5. The Ayurvedic Formulary of India. Part II. 2nd ed. Formulary – Single drugs. list of single drugs of plant origin. New Delhi: government of India, ministry of health and family welfare department of indian systems of medicine and homoeopathy, 2000, p: 307-30.
6. Dianita R and Jantan I. Ethnomedicinal uses, phytochemistry and pharmacological aspects of the genus *Premna*: a review. *Pharm. Biol.* 2017; 55(1): 1715-1739. doi: 10.1080/ 13880209.2017. 1323225.
7. Perry L M and Metzger J. Medicinal plants of east and southeast Asia. Attributed properties and uses. Cambridge Massachusetts. The MIT Press. 1980.
8. Kumari H, Shrikanth P, Pushpan R, Harisha CR and Nishteswar K. Comparative pharmacognostical evaluation of leaves of regionally accepted source plants of *Agnimantha*. *J. Res. Educ. Indian Med.* 2013; 19(1-2): 1-8.
9. Harley R M, Atkins S, Budantsev A L, Cantino P D, Conn B J, Grayer R, Harley M M, Kok R, Krestovskaja T, Morales R, Paton A J, Ryding O and Upson T. Labiatae In: Labiatae. In: Kadereit, J.W., Ed., Flowering plants. Dicotyledons. The

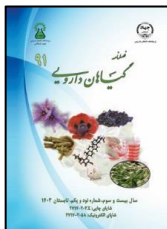
- families and genera of vascular plants, Vol. 7, Springer, Berlin: 2004, 167-275. doi: 10.1007/978-3-642-18617-2_11.
- 10.** Olmstead R. A synoptical classification of the Lamiales. 2012.
- 11.** Tan Y and Li B. Taxonomic studies on the genus *Premna* (Lamiaceae) in China – I: the identities of *P. fulva* and *P. tapintzeana*. *Phytotaxa*. 2014; 173(3): 207-216. doi: 10.11646/phytotaxa.173.3.3.
- 12.** de Kok R. The genus *Premna* L. (Lamiaceae) in the Flora Malesiana area. *Kew Bull.* 2013; 68: 55-84. doi: 10.1007/s12225-013-9433-5.
- 13.** Kumar B D, Deepika D S and Raju AJS. On the reproductive ecology of *Premna latifolia* L. and *Premna tomentosa* willd. (Lamiaceae). *Journal of Threatened Taxa*. 2018; 10(1): 11105-11125. doi: 10.11609/jott.3201.10.1.11105-11125.
- 14.** Kabra A, Kabra R and U S Baghel. *Premna* Species: A Review. *J. Biol. Chem. Chron.* 2015; 1(1): 55-59.
- 15.** Kanjilal U. The forest flora of the Siwalik and Jaunsar Forest Division, U.P. *The Manager of Publications*, Delhi, 1969, pp: 395-396.
- 16.** Agro-techniques of selected medicinal plants, vol II. National Medicinal Plants Board, Department of AYUSH, Ministry of health and family welfare, Government of India. 2014, pp: 77-80.
- 17.** The Ayurvedic Pharmacopoeia of India, Formulations. Part II. 1st ed., Vol. I, 13-16. New Delhi: Government of India, Ministry of Health and Family Welfare, Department of Ayurveda, Yoga and Naturopathy, Unani, Siddha and Homoeopathy (AYUSH); 2007, pp: 65-70.
- 18.** Virshette S J, Patil M K and Shaikh J R. A review on pharmacological properties and phytoconstituents of indigenous carminative agents. *J. Pharmacog. Phytochem.* 2020; 9(3): 142-145.
- 19.** Terangpi R, Basumatary R and Teron R. Nutritional consideration of three important emergency food plants studied among Karbi Tribe of North East India. *J. Sci. Innov. Res.* 2015; 4(3): 138-141. doi: 10.31254/jsir.2015.4306.
- 20.** Vestri Alvarenga S A, Gastmans J P, do Vale Rodrigues G, Moreno P R H and de Paulo Emerenciano V. A computer-assisted approach for chemotaxonomic studies – diterpenes in Lamiaceae. *Phytochem.* 2001; 56(6): 583-595. doi: 10.1016/S0031-9422(00)00424-6.
- 21.** Rao C B, Rao T N and Vijayakumar E K S. Some novel aromatic diterpenes from *Premna latifolia* Roxb. *Current Science*. 1978; 47(13): 455-456.
- 22.** Rao C B, Raju G V S. New flavone glycosides from the leaves of *Premna latifolia* Roxb. *Curr. Sci.* 1981; 50(4): 180-181.
- 23.** Rao C B, Raju G V S and Krishna P G. Chemical examination of *Premna* species. Part VII. constituents of root bark of *Premna latifolia* var. *cuneata*. *Chem.* 1982; 294-298. doi: 10.1002/CHIN.198245333.
- 24.** Dinda B, Mohanta B C, Ghosh P, Sato N and Harigaya Y. Chemical constituents of *Parkia javanica*, *Alocasia indica* and *Premna latifolia*. *J. Indian Chem. Soc.* 2010; 87: 829-831. doi: 10.5281/zenodo.5806144.
- 25.** Lirio S B, Macabeo A P G, Paragas E M, Knorn M, Kohls P, Franzblau S G, Wang Y and Aguinaldo M A M. Antitubercular constituents from *Premna odorata* Blanco. *J. Ethnopharmacol.* 2014; 154: 471-474. doi: 10.1016/j.jep.2014.04.015.
- 26.** Rao C B, Vijayakumar E K and Vijayalakshmi K V. Iridoids from *Premna latifolia*. *Planta Med.* 1981; 41: 80-83. doi: 10.1055/s-2007-971680.

27. Ghosh P S, Das N and Dinda B. Antioxidant flavone glycosides and other constituents from *Premna latifolia* leaves. *Indian J. Chem.* 2014; 53(B): 746-9.
28. Tietze L F. Secologanin, a biogenetic key compound – synthesis and biogenesis of the iridoid and secoridoid glycosides. *Angew. Chem. Int. Ed. Engl.* 1983; 22(11): 828-841. doi: 10.1002/anie.198308281.
29. Kumar R, Kumar B, Kumar A, Kumar A and Singh M. GC-MS analysis of Phytocomponents in the methanol extract of *Premna latifolia* Roxb. *Pharmacog. Res.* 2022; 14(1): 19-23. doi: 10.5530/pres.14.1.4.
30. Suresh G, Babu K S, Rao V R S, Rao M S A, Nayak L V and Ramakrishna S. Novel cytotoxic icetexane diterpenes from *Premna latifolia* Roxb. *Tetrahedron Letters*, 2011; 52(12): 1273-1276. doi: 10.1016/j.tetlet.2011.01.025.
31. Palariya D, Singh A, Dhami A, Pant A K, Kumar R and Prakash O. Phytochemical analysis and screening of antioxidant, antibacterial and anti-inflammatory activity of essential oil of *Premna mucronata* Roxb. leaves. *Trends Phytochemical Res.* 2019; 3(4): 275-286.
32. Ali M, Sultana S and Mir S. Chemical constituents from the seeds of *Celastrus paniculatus* Willd., leaves of *Caesalpinia bonduc* (L.) Roxb. and root barks of *Premna mollissima* Roth. *EJPMR.* 2020; 7(3): 418-427.
33. Ram A J, Bhakshu L M and Venkata Raju R R. *In vitro* antimicrobial activity of certain medicinal plants from Eastern Ghats, India, used for skin diseases. *J. Ethnopharmacol.* 2004; 90(2-3): 353-357. doi: 10.1016/j.jep.2003.10.013.
34. Francis S. Antifungal effect of leaf extract of *Premna latifolia* Roxb. on *Rhizopus* and *Fusarium* Species. *IJCRT.* 2023; 11(7): 462-469.
35. Sharma J, Gairola S, Sharma Y P and Gaur R D. Ethnomedicinal plants used to treat skin diseases by Tharu community of district Udham Singh Nagar, Uttarakhand, India. *J. Ethnopharmacol.* 2014; 158: 140-206. doi: 10.1016/j.jep.2014.10.004.
36. Kalaichelvi K and Dhivya SM. Phytochemical screening and antibacterial activity of leaf extract of *Martynia annua*, L. and *Premna latifolia*, Roxb. *J. Med. Plants Studies.* 2016; 4(4):84-87.
37. Kumari H, Shrikanth P, Pushpan R and Niteshwar K. A Comparative experimental evaluation of anti-inflammatory of *Premna obtusifolia* and *Premna latifolia* leaves in Charles foster rats. *Anc. Sci. Life* 2011; 2: 58-61.
38. Mahire B, Tote M V, Jain A P and Undale V Bhosle A V. Anti-inflammatory effect of *Premna latifolia* leaves. *Pharmacologyonline.* 2009; 3: 929-937.
39. Krishnamoorthi R and Bai VR: Phytochemical analysis and antioxidant property of *Premna latifolia*. *Int. J. Pharmacognosy.* 2015; 2(8): 414-18. doi: 10.13040/IJPSR.0975-8232.IJP.2(8).414-18.
40. Pandey G, Chaudhary V, Yadav S, Chauhan P S, Gupta S S, Mishra A, Rawat A K S and Rao V. Wound healing activity of *Premna latifolia* Roxb. *Journal of Pharmaceutical Research International.* 2014; 4(8): 929-942. doi: 10.9734/BJPR/2014/8787.
41. Aravindakshan C and Jayanthi Bai N. Effect of *Premna latifolia* Roxb and *Imperata arundinacea* Cyril on *in vitro* oxalate crystal growth. *Indian J. Clin. Biochem.* 1996; 11(1): 42-5. doi: 10.1007/BF02868410.
42. Renjana P K and Thoppil J E. Larvicidal activities of the leaf extracts and essential oil of *Premna latifolia* Roxb. (Verbenaceae) against *Aedes albopictus* Skuse (Diptera : Culicidae).

JAPS. 2013; 3(6): 101-5. doi: 10.4314/tjpr.v17i5.7.
10.7324/JAPS.2013.3616.

43. Gowtham M, Asharani IV and Paridhavi M. Antidiabetic activity of compounds isolated from the roots of *Premna latifolia* Roxb. *Trop. J. Pharm. Res.* 2018; 17(5): 795-802. doi:

How to cite this article: Rawat Sh, Thapliyal M. A review on ethnopharmacology and phytochemistry of *Premna mollissima* Roth. *Journal of Medicinal Plants* 2024; 23(91): 16-27.
doi: 10.61186/jmp.23.91.16

**Premna mollissima Roth. فیتوشیمی و اتنوفارماکولوژی**

شوینا راوات*، مانیشا تاپلیال

آزمایشگاه بذر درختان جنگلی، موسسه تحقیقات جنگل، ده رادون، اوتاراکنند، هندوستان

اطلاعات مقاله	چکیده
گل‌واژگان: <i>Premna mollissima</i> Roth. نعناعیان ضد التهاب آگنیمانتا آیورودا	<p>مقدمه: گیاه دارویی <i>Premna mollissima</i> Roth. متعلق به تیره نعنائیان و درختی کوچک و خزان کننده است که معمولاً به نام dusky fire brand bark نامیده می‌شود. این گیاه اغلب در اقلیم‌های گرمسیری یا نیمه گرمسیری مناطق تپه‌ای یا جنگلی هند، سریلانکا، بنگلادش و میانمار پراکنده است. هدف: یک مرور سیستماتیک از مطالعه اتنوفارماکولوژی و فیتوشیمیایی گیاه <i>P. mollissima</i>. است که شامل اهمیت درمانی (همانطور که در متون علمی ذکر شده) و جنبه‌های دارویی آن (که قبلاً در پارامترهای علمی امروزی مورد بررسی قرار گرفته‌اند) می‌شود. روش بررسی: مرور علمی قوم-داروشناسی گیاه <i>P. mollissima</i> از طریق متون علمی و همچنین جستجوی مقالات تحقیقاتی مرتبط با فارماکولوژی، کاربردهای سنتی، فیتوشیمی و فعالیت‌های درمانی گیاه در پایگاه‌های علمی Pubmed، Science Direct، Google Scholars، Scopus و Web of Science از تاریخ پیدایش تاکنون صورت پذیرفت. برای جستجوی ادبیات کلمات کلیدی "<i>Premna mollissima</i>"، "<i>Agnimanth</i>" و "<i>Phytochemistry</i>" برای یافتن توضیحات گیاه استفاده شد. نتایج: از گیاه می‌توان ترکیبات شیمیایی مختلفی مانند پرمنین، ۷-داستیل پرمنین، پرمنلاتیفولین، کوئرتستین و غیره به دست آورد. ریشه، برگ و پوست این درخت در طب آیورودا (طب سنتی هندوستان) برای درمان بسیاری از بیماری‌ها مانند آبریزش بینی، خیز، کورک، تب، روماتیسم، بیماری‌های عصبی و غیره استفاده می‌شود. مطالعات مختلف نشان‌دهنده خاصیت قابض، ضد التهاب، مدر، مغذی، هضم کننده و ضد باکتریایی آن است. نتیجه‌گیری: این مطالعه تلاشی برای گردآوری یک مرور جامع و به‌روز در مورد گیاه <i>P. mollissima</i> است که مشتمل بر مصارف طب سنتی و عامیانه، فیتوشیمی و داروشناسی گیاه است. این تحقیق به محققان آینده کمک می‌کند تا بیشتر در مورد ترکیبات فعال گیاهی و اثرات دارویی آن تحقیق کنند.</p>

مخفف‌ها: DPPH، 2,2-diphenyl-1-picrylhydrazyl، ABTS، 2,2'-azino-bis (3-ethylbenzothiazoline-6-sulphonic acid)

* نویسنده مسؤول: rawatshweta0108@gmail.com

تاریخ دریافت: ۱۳ خرداد ۱۴۰۳؛ تاریخ دریافت اصلاحات: ۲۱ آبان ۱۴۰۳؛ تاریخ پذیرش: ۲۳ آبان ۱۴۰۳

doi: [10.61186/jmp.23.91.16](https://doi.org/10.61186/jmp.23.91.16)© 2023. Open access. This article is distributed under the terms of the Creative Commons Attribution-NonCommercial 4.0 International License (<https://creativecommons.org/licenses/by-nc/4.0/>)